

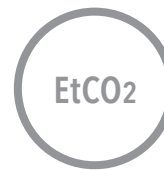
# EMMA™ Capnograph

Portable Real-time Capnography



Actual Size

## Measurements



End-Tidal Carbon Dioxide

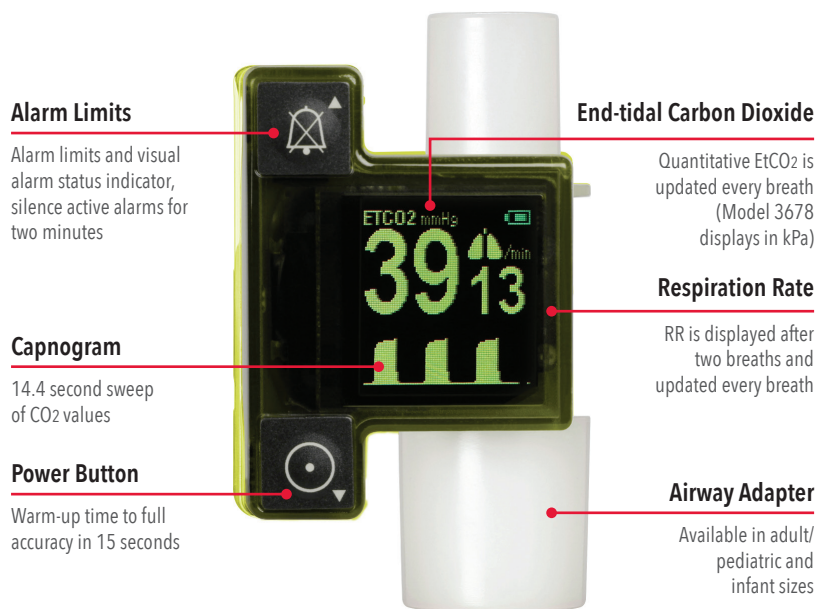


Respiration Rate

- > **Immediate results** – minimal warm-up time, with end-tidal carbon dioxide (EtCO<sub>2</sub>) and respiration rate (RR) measurements and real-time EtCO<sub>2</sub> waveform displayed in 15 seconds
- > **Small, portable capnograph** – lightweight design fits in the palm of your hand for mobility and convenience during short-term EtCO<sub>2</sub> monitoring of adult, pediatric, and infant patients
- > **Designed to fit easily onto a breathing circuit** – flexible use at multiple points of care including pre-hospital, emergency medicine, operating room, intensive care unit, and long-term acute care
  - In a study published in *Circulation*, researchers stated, "continuous quantitative waveform capnography is recommended for confirmation and monitoring of endotracheal tube placement."<sup>1</sup>
- > **Rugged design** for reliable operation in challenging environments
- > **Easy to maintain** – no routine calibration required

## Features

- > **Clear, continuous capnogram** of carbon dioxide values
- > **Simple, easy-to-use interface** for quick set-up and one-touch programming
- > **Audible and visual alarm system** for No Adapter, Clogged Adapter, No Breath (Apnea), Low Battery and adjustable High and Low EtCO<sub>2</sub> alarm
- > **Battery life for up to 10 hours** of normal use with two standard AAA lithium batteries



## Performance

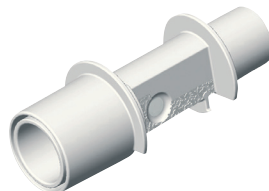
RANGES	ENVIRONMENTAL
CO <sub>2</sub> ..... 0-99 mmHg	Operating temperature ..... -5 to 50° C (23 to 122° F)
RR ..... 3-150 bpm	Operating atmospheric pressure ..... 70 to 120 kPa
	Operating humidity ..... 10-95%, non-condensing
	Storage temperature ..... -30 to 70° C (-22 to 158° F)
	Storage atmospheric pressure ..... 50 to 120 kPa
ACCURACY (STANDARD CONDITIONS)	PHYSICAL CHARACTERISTICS
CO <sub>2</sub> ..... 0-40 mmHg ±2 mmHg; 41-99 mmHg 6% of reading	Dimensions ..... 2.1 x 1.5 x 1.5" (5.2 x 3.9 x 3.9 cm)
0-5.3 kPa ±0.3 kPa; 5.4-9.9 kPa 6% of reading	Weight ..... 2.1 oz (59.5 g) (with Alkaline batteries)
RR ..... ±1 bpm	
BATTERIES	ADAPTER INFORMATION
Type ..... 2 (two) AAA Cell Alkaline or Lithium	Dead space adult/pediatric ..... 6 ml
Battery life ..... 6 hours (Alkaline)	Dead space infant ..... 1 ml
10 hours (Lithium)	

## Kit

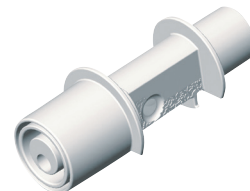


- > **EMMA Kit\***  
EMMA (mmHg) PN 3639  
EMMA (kPa) PN 3678

## Accessories



- > **EMMA Airway Adapter**  
Adult/Pediatric  
Box of 25  
PN 17448



- > **EMMA Airway Adapter**  
Infant  
Box of 10  
PN 17449

\*In order for the EMMA Kit to provide readings, either of the listed airway adapters is required. Kit includes EMMA, pouch, and lanyard.

<sup>1</sup> Neumar RW et al. *Circulation*. 2010;122:S729-S767.

Caution: Federal (USA) law restricts this device to sale by or on the order of a physician. See instructions for use for full prescribing information, including indications, contraindications, warnings, and precautions.

**Masimo U.S.**  
Tel: 1 877 4 Masimo  
info-america@masimo.com

**Masimo International**  
Tel: +41 32 720 1111  
info-international@masimo.com

