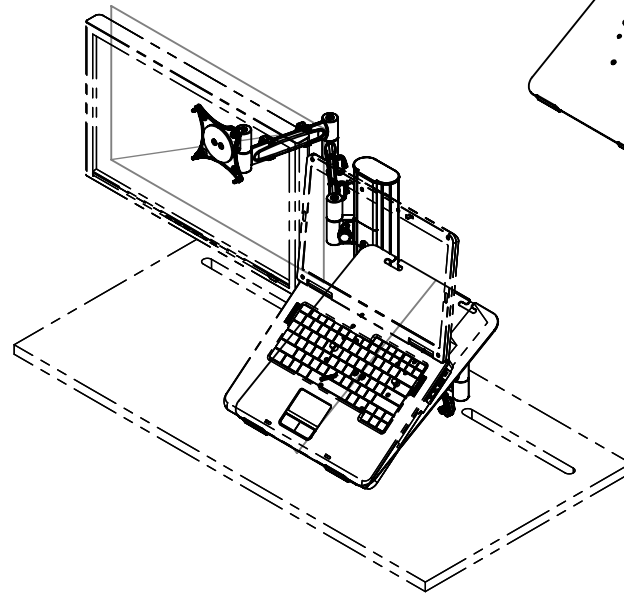
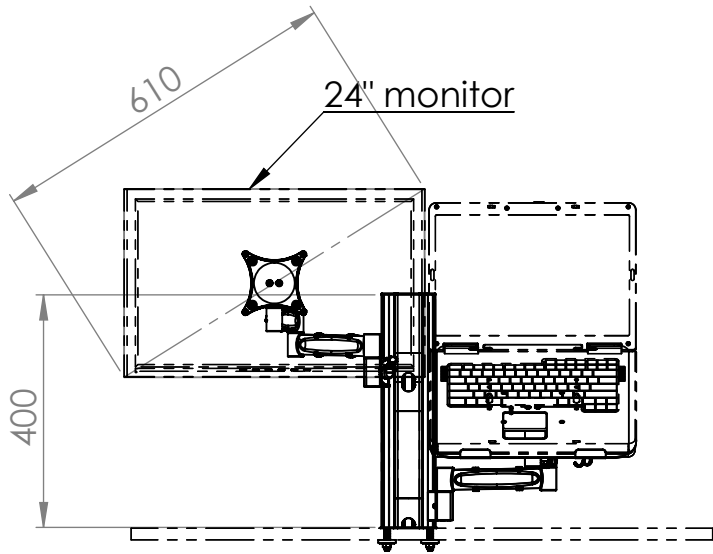
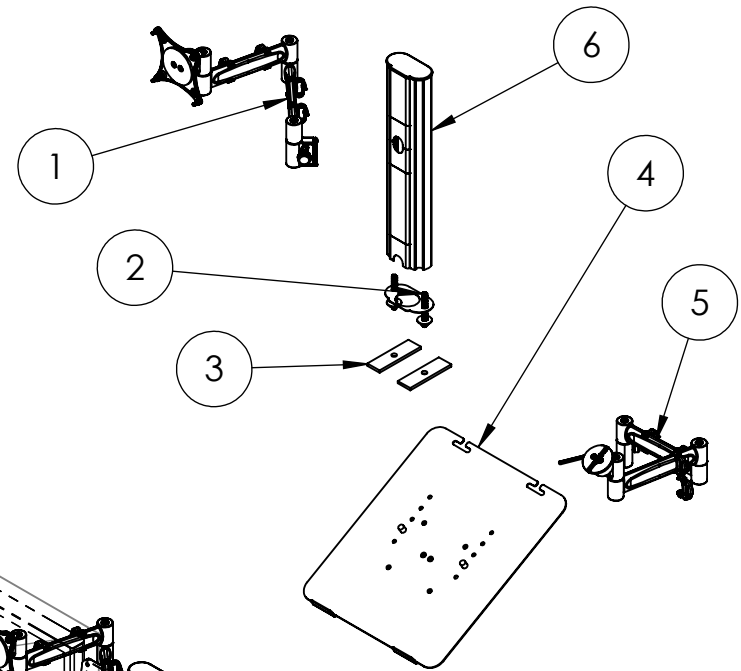


ITEM NO.	Part Number	REV	DESCRIPTION	QTY.
1	MAKP2-BAR-10	2	Mercury 2 Limb Arm, FLW, 360 Knuckle	1
2	PCPG7-BPP-00	3	A4PP Grommet Clamp	1
3	SAM0140	0	Strip, Steel, 100 x 32 x 5mm	2
4	PXTK1-BAS-07	2	Adjustable Docking Station Assembly	1
5	MAKP2-BAR-10K	0	2-Limb Mercury, FLW, No Vesa	1
6	DEV2352	A	A4P+ 400, 3 x Horseshoe Tiles	1



PROPRIETARY AND CONFIDENTIAL
 THE INFORMATION CONTAINED IN THIS DRAWING IS THE SOLE PROPERTY OF MODTEC. ANY REPRODUCTION IN PART OR AS A WHOLE WITHOUT THE WRITTEN PERMISSION OF MODTEC IS PROHIBITED.

TOLERANCES
 ALL TOLERANCES UNLESS OTHERWISE SPECIFIED:
 X.XX ± 0.05
 X.X ± 0.1
 X ± 0.5



REVISIONS:			
REV	DATE	DRAWN	REASON
D	27/03/2013	CN	A4P+ post now has horseshoe tiles
C	25/03/2013	CN	Unit changed to work in slotted desk
B	19/03/2013	CN	Mount changed
A	18/03/2013	CN	First Issue

COMMENTS:

DIMENSIONS ARE IN MM DO NOT SCALE DRAWING

	NAME	DATE
DRAWN	CN	27/03/2013
CHECKED		
APPROVED	BD	27/03/2013
MATERIAL:		
FINISH:		
WEIGHT:		

MODTEC INDUSTRIES LTD

DESCRIPTION: Apollo4 Power+, Laptop, Desk Rail Mount

DEV NUMBER: DEV2317

REVISION: D

SCALE: 1:13 SHEET 1 OF 1

FILE NAME: DEV2317 RevD Apollo4 Power+, Laptop, Desk Rail Mount